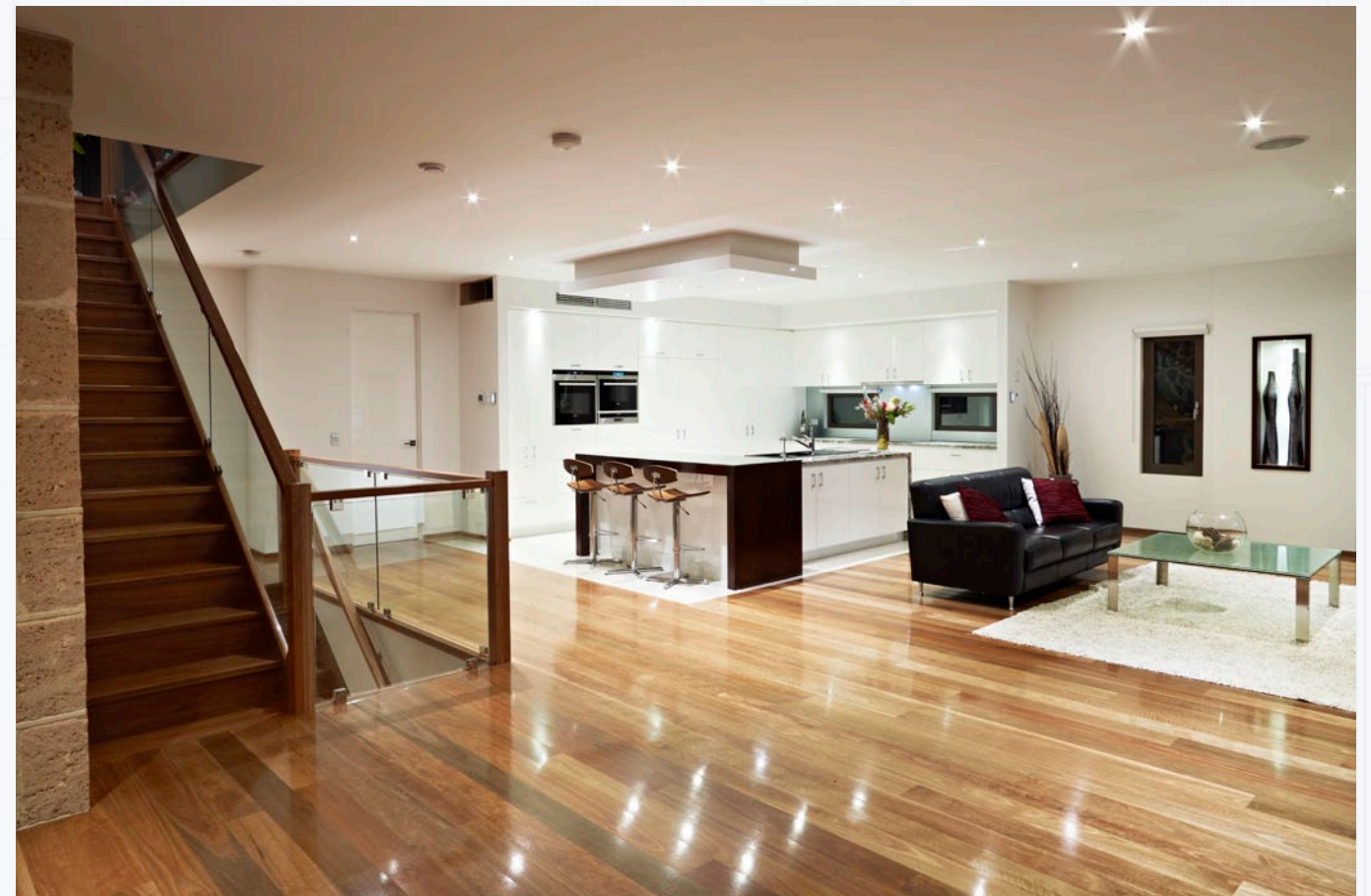




# Machu Picchu

The Home with the Green Heart

This gorgeous eco-friendly design by Calm Living Homes aims to incorporate the basic principles of sustainable building and green technologies into an aesthetically appealing envelope without compromising on quality of materials or endurance of design.





It is the strong and tangible link to nature that gives this home its unique identity. The flat roof features a pasture-style garden, predominately featuring indigenous plants and grasses. As well as its inherent aesthetic qualities, this garden roof provides great thermal insulation and a natural rainwater filter, in addition to creating a strong visual link to the landscaping that extends into the home. Internal vertical gardens act as a natural bio filter, converting toxic gasses into oxygen and increasing the calm, fresh ambience of the interior.

The home has been designed with three zoned levels that step down the sharply sloped block. The first level, the lower basement, contains amenity space and a study, and provides a strong grounding for the home. The ground floor is the living and entertainment space, containing the kitchen and family room and providing a warm and inviting space in which the family can congregate. On the top floor, bedrooms and a kids' retreat supply ample private space to ensure family harmony.

The interior spaces are crafted with subtle luxury, found in the enduring surfaces and handsome finishes, giving the interior a cosy, welcoming ambience that is clearly modern but also timeless. The Boral spotted gum flooring is a sustainable timber that provides warmth to the internal composition, tempered by travertine marble, porcelain tiles and cornstarch carpet upstairs.

With the mark of excellent sustainable architecture, the home is close to carbon neutral. Low energy appliances and LED lighting minimise electricity use, while the 5.0kw solar power system is close to supplying the home with all its energy needs.

Combining a deep understanding of sustainable and eco-friendly building techniques with solid construction and attention to aesthetic detail, this beautiful building is designed to last. Not only will the finishes endure, but the home will improve with age: the toscano natural roman render will integrate with the mud rock used in the water feature. Plants, creepers, and various coloured pigface plants will grow over the sides of the building, softening sharp edges and giving the structure the appearance of being a naturally formed, large rock being slowly reclaimed by plants. Externally, no high maintenance products or timber were used, giving the building envelope a life expectancy of over 100 years.

Photography by Kristian Gehrardt

#### **Calm Living Homes**

8 Olivette Avenue, Upper Ferntree Gully VIC 3156

T: 0418 177 380

[www.calmivinghomes.com.au](http://www.calmivinghomes.com.au)

